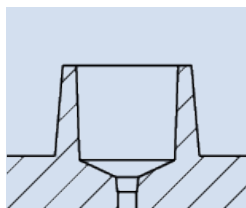




## Microfluidic Interfaces and their Accessories

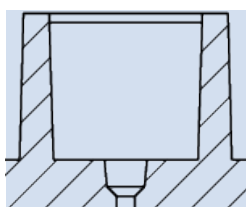
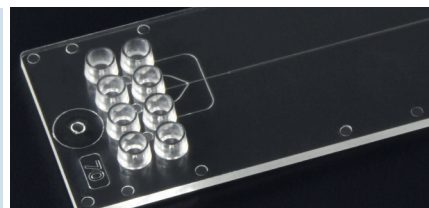
### Introducing our Interfaces

We offer five different interfaces on our microfluidic chips. Choose the interface and chip that suits your project best.



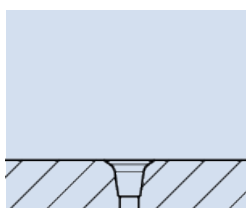
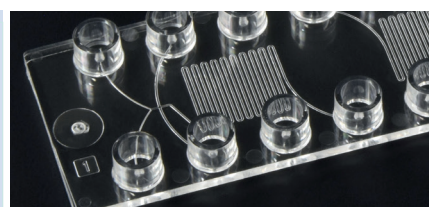
#### Mini Luer

- Compatible with many accessories
- Easy handling
- Assemble tubing with the chip through connectors
- Small footprint on the chip



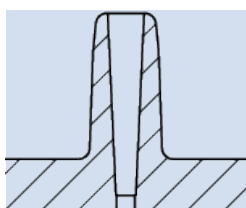
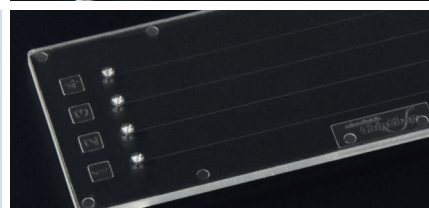
#### Luer

- Compatible with many accessories
- Easy handling
- Assemble tubing with the chip through connectors



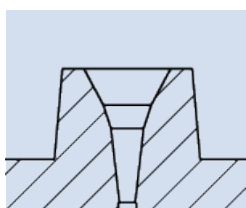
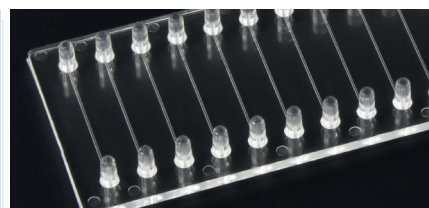
#### Through-hole

- No dead volume
- Pipette directly into interface, no accessories needed
- Stand-alone Luer, Mini Luer and olive interfaces can be applied



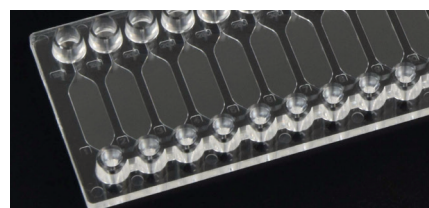
#### Olive

- Very little dead volume
- Tubing can be directly connected

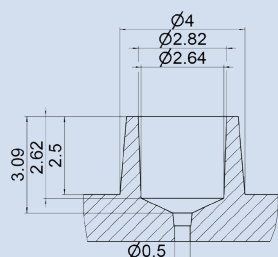


#### Pipetting interface

- No dead volume
- Pipette directly into interface, no accessories needed
- Allows automation with pipetting robots



# Introducing the Mini Luer Interface



The Mini Luer interface is our most versatile interface.

Choose from a wide range of accessories to fill, close or connect your chip

Key features:

- Volume: 16.5  $\mu$ l
- Inner diameter: 2.64 mm
- Height: 2.5 mm
- Pitch between two Mini Luer interfaces on a chip: 4.5 mm

## The Mini Luer interface is compatible with...



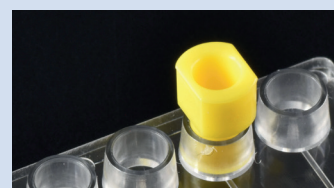
Male Mini Luer Fluid connector single



Mini Luer tube tuck adapter



Mini Luer to Luer adapter



Mini Luer to pipette adapter



Male Mini Luer plug, single



Mini Luer plug with low volume displacement (one wing)



Mini Luer cap



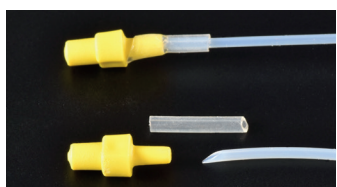
Mini Luer flat cap

## The Male Mini Luer Connector Fluidic 331

The connector joins tubing with the Mini Luer interface.



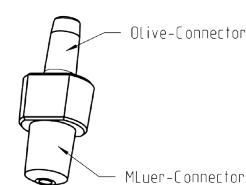
Male Mini Luer fluid connector single



Male Mini Luer fluid connector assembly



Male Mini Luer fluid connector four in a row



Schematic drawing of a fluid connector

- Connect the PTFE tube with the connector through a silicone sleeve
- The silicone sleeve should not exceed 1 cm in length to reduce dead volume
- We produce the fluid connector as single, twin or in a row of four in different materials

Product Code for Fluidic 331	Description	Material	Color	Price [€/10 pieces]			
				1+	5+	10+	20+
10000095	Single	PP	Yellow*	19.00	14.00	9.40	7.40
10000425	Twin	PP	Opaque*	19.00	14.00	9.40	7.40
10000321	Row of four	PP	Opaque*	19.00	14.00	9.40	7.40
10000116	Single	TPE	Opaque*	19.00	14.00	9.40	7.40

\*other options available

### Did you know?

We offer most of our accessories in different colors (red, green, yellow, opaque and blue) and made of different materials (PP, TPE) to help you find the perfect fit.

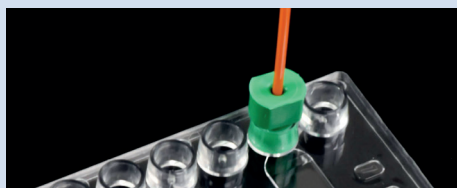


## The Mini Luer Tube Tuck Connector Fluidic 997 and Fluidic 1579

The tube tuck connector connects the tube to the Mini Luer interface by clamping it. The tube tuck connector Fluidic 997 fits 1/32" tubing while Fluidic 1579 is designed for 1/16" tubing.



Mini Luer tube tuck connector



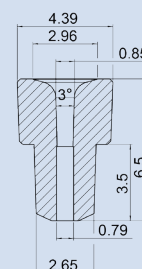
Mini Luer tube tuck connector FL. 997 in action



Mini Luer tube tuck connector FL. 1579 in action

- Assemble the tube tuck connector on the chip
- Insert the tube directly into the connector
- Works best with 1/16" or 1/32" PEEK tubing
- Withstand up to 3.2 bar
- Can also be used with our PTFE tubing

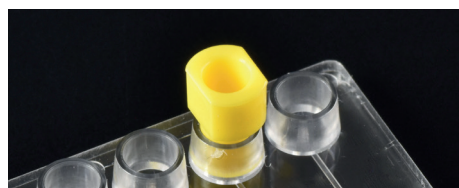
Product Code for Fluidic	Fluidic	Description	Material	Color	Price [€/10 pieces]			
					1+	5+	10+	20+
10001764	997	Mini Luer Tube tuck connector (1/32")	TPE	Green	19.00	14.00	9.40	7.40
10001765	997	Mini Luer Tube tuck connector (1/32")	TPE	Yellow	19.00	14.00	9.40	7.40
10002010	1579	Mini Luer Tube tuck connector (1/16")	TPE	Blue	19.00	14.00	9.40	7.40



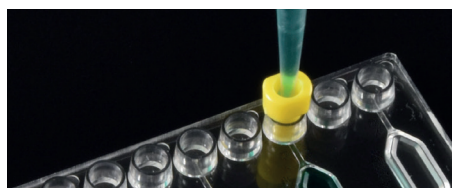
Schematic drawing of a Mini Luer tube tuck connector

## The Mini Luer to Pipette Adapter Fluidic 391

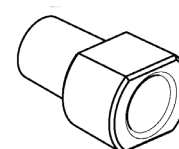
The Mini Luer to pipette adapter aids the filling of a chip featuring Mini Luer interfaces through a pipette.



Mini Luer to pipette adapter



Mini Luer to pipette adapter in action



Schematic drawing of a Mini Luer to pipette adapter

- Assemble the pipette adapter on the chip
- Insert the pipette directly into the adapter with little pressure
- Gently fill the chip through the pipette

Product Code for Fluidic 391	Description	Material	Color	Price [€/10 pieces]			
				1+	5+	10+	20+
10000057	Mini Luer to pipette adapter	PP	Yellow	19.00	14.00	9.40	7.40

## The Mini Luer to Luer Adapter Fluidic 390

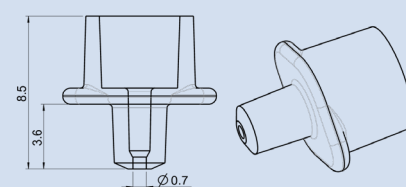
The Mini Luer to Luer adapter enables you to fill your chip with a Mini Luer interface with a Luer syringe.



Mini Luer to Luer adapter



Mini Luer to Luer adapter in action



Schematic drawing of a Mini Luer to Luer adapter

- Assemble the Mini Luer to Luer adapter on the chip
- Insert the syringe (or other device with standard Luer interface) directly into the adapter
- Gently fill the chip through the syringe

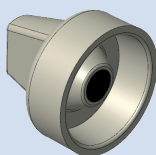
Product Code for Fluidic 390	Description	Material	Color	Price [€/10 pieces]	
				1+	10+
10000063	Mini Luer to Luer adapter	PP	Opaque	19.00	9.40

## The Mini Luer Cap Fluidic 1262 and Mini Luer Flat Cap Fluidic 1230

The Mini Luer cap seals the interface without touching the content of the interface.



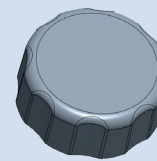
Mini Luer cap Fluidic 1262



Schematic drawing of Mini Luer cap Fluidic 1262



Mini Luer flat cap Fluidic 1230



Schematic drawing of Mini Luer flat cap Fluidic 1230

- The Mini Luer cap can be placed on top of the Mini Luer interface directly

Product Code	Description	Material	Color	Price [€/10 pieces]			
				1+	5+	10+	20+
10001687	Mini Luer Cap	TPE	Green*	19.00	14.00	9.40	7.40
10001766	Mini Luer Flat Cap	TPE	Opaque	19.00	14.00	9.40	7.40

\*other options available

## The Male Mini Luer Plug Fluidic 334

The male Mini Luer plug closes your in- and outlets to avoid evaporation and contamination of the fluids in the chip.



Mini Luer plug single



Mini Luer plug twin



Mini Luer plug row of four



Mini Luer interface  
Schematic drawing of the Mini Luer plug

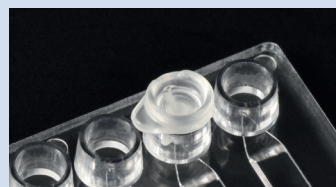
- The Mini Luer plug comes as single, twin or in a row of four

Product Code for Fluidic 334	Connector Type	Material	Color	Price [€/10 pieces]			
				1+	5+	10+	20+
10000053	Single	PP*	Red*	19.00	14.00	9.40	7.40
10000181	Twin	PP*	Green*	19.00	14.00	9.40	7.40
10000345	Row of four	PP*	Opaque*	19.00	14.00	9.40	7.40
10000054	Single*	TPE	Opaque	19.00	14.00	9.40	7.40

\*other options available

## The Mini Luer Plug with Low Volume Displacement Fluidic 438 and 793

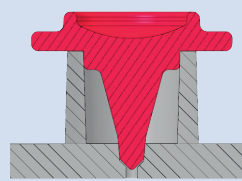
The Mini Luer plug with low volume displacement seals in- and outlets on your chip. It is especially designed to avoid pushing air into the channel.



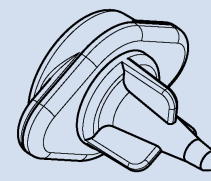
Mini Luer plug with low volume displacement, one wing



Mini Luer plug with low volume displacement, two wings



Mini Luer plug with low volume displacement, two wings



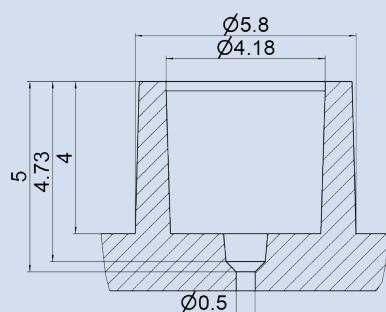
Mini Luer plug with low volume displacement, two wings

- We offer plugs with low volume displacement with one and two wings
- Plugs with two wings are used when the interface needs to be opened and closed several times as they are easier to grip
- Plugs with one wing need less space and are especially useful when the chip is crowded with accessories
- These plugs seal the channel itself, as well as the interface. Ideal for PCR chips!

Product Code	Fluidic	Description	Material	Color	Price [€/10 pieces]			
					1+	5+	10+	20+
10001068	793	One wing	TPE*	Opaque*	19.00	14.00	9.40	7.40
10000280	438	Two wings	PP*	Red*	19.00	14.00	9.40	7.40

\*other options available

## Introducing the Luer Interface



The Luer interface is a versatile interface for your microfluidic chip. It is an international standard for (micro-) fluidic devices.

Key features are:

- Volume: 53  $\mu$ l
- Inner diameter: 4.18 mm
- pitch between interfaces: 9 mm
- Choose from a wide range of accessories to fill, close or connect your chip

### The Luer interface is compatible with...



Male Luer fluid connector



Male Luer tube tuck connector



Male Luer plug with strip



Male Luer plug



Male Luer plug with low volume displacement, 2 wings



Male Luer plug with low volume displacement

#### Did you know? Liquid storage in tanks and blisters

We offer tanks for liquid storage on the chip. You can choose from gravity-driven or pneumatic actuation. For long-term storage we recommend blisters. Check out our Flyer on blisters or visit the [ChipShop](https://www.chipshop.ch) website for more information!

## The Male Luer Fluid Connector Fluidic 263

The fluid connector is a safe and flexible way to connect your tubing to the Luer interface. It is designed to massively reduce the dead volume compared to conventional interfaces. This allows for smooth pumping without significant pressure drops.



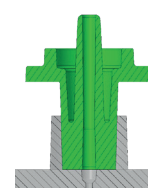
Male Luer fluid connector



Male Luer fluid connector, assembly



Male Luer fluid connector, in action



Schematic drawing of the male Luer fluid connector

- Connect the PTFE tube with the connector through a silicone sleeve
- The silicone sleeve should not exceed 1 cm in length to reduce dead volume
- Connectors can be mounted and dismantled on the Luer interface several times

Product Code for Fluidic 263	Description	Material	Color	Price [€/10 pieces]	
				1+	10+
10000080	Luer fluid connector	PP*	Green*	25.00	14.40

\*other options available



## The Male Luer Tube Tuck Connector Fluidic 1580 and Fluidic 1581

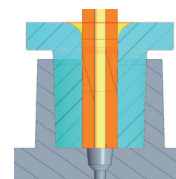
The tube tuck connector connects the tube to the Luer interface by clamping it. The tube tuck connector Fluidic 1580 fits 1/32" tubing while Fluidic 1581 is designed for 1/16" tubing.



Male Luer tube tuck connector



Male Luer tube tuck connector in action



Schematic drawing of a Male Luer tube tuck connector

- Assemble the tube tuck connector on the chip
- Insert the tube directly into the connector
- Works best with 1/16" or 1/32" PEEK tubing
- Withstand up to 3.2 bar
- Can also be used with our PTFE tubing

Product Code for Fluidic	Fluidic	Description	Material	Color	Price [€/10 pieces]	
					1+	10+
10002011	1580	Luer Tube tuck connector (1/32")	TPE	Green	25.00	14.40
10002012	1581	Luer Tube tuck connector (1/16")	TPE	Blue	25.00	14.40

## The Luer Plug with Reduced Displaced Volume Fluidic 262 and 1223

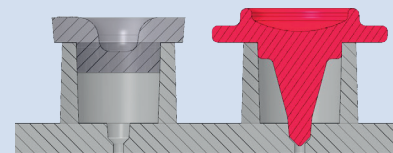
The Male Luer plug with reduced displaced volume seals in- and outlets on your chip. Fluidic 262 is designed not to touch the content of the channel and interface to reduce contamination. Fluidic 1223 seals the interface and channel at the same time. They are both designed to avoid trapping air in the interface and pushing it into the channel.



Male Luer plug with reduced displaced volume Fluidic 262



Male Luer plug with reduced displaced volume Fluidic 1223



Fluidic 262 and Fluidic 1223 in comparison

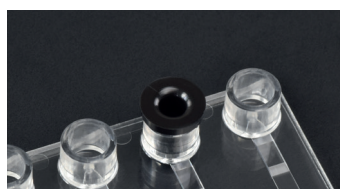
- We offer two different plugs with low volume displacement
- Fluidic 262 need less space and is especially useful when the chip is crowded with accessories
- Fluidic 1223 used when the interface needs to be opened and closed several times as they are easier to grip
- Fluidic 1223 seals the channel itself, as well as the interface. Ideal for PCR chips!

Product Code	Description	Fluidic	Material	Color	Price [€/10 pieces]			
					1+	5+	10+	20+
10000082	Male Luer plug with reduced displaced volume	262	PP*	Opaque*	25.00	-	14.40	-
10001592	Male Luer plugs with reduced displaced volume	1223	PP*	Red*	19.00	14.00	9.40	7.40

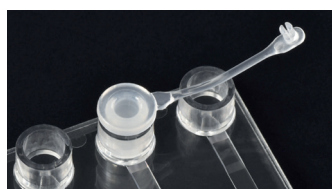
\*other options available

## The Male Luer Plug Fluidic 270 and Male Luer Plug with Strip Fluidic 264

The Male Luer plug seals in- and outlets on your chip. The strip helps removing the plug in case you need to open and close the in- or outlet frequently.



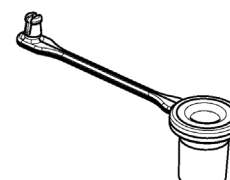
Male Luer plug Fluidic 270



Male Luer plug with strip Fluidic 264



Schematic drawing of the male Luer plug Fluidic 270



Schematic drawing of the male Luer plug with strip Fluidic 264

- To reduce the risk of sealing air in your chip, place the plug on the interface at an angle and slide it into place gently
- Apply firm pressure to securely close the interface

Product Code	Connector Type	Material	Color	Price [€/10 pieces]			
				1+	5+	10+	20+
10000231	Male Luer plug	PP	Black*	19.00	14.00	9.40	7.40
10000084	Male Luer plug with retaining strip	PP	Opaque*	25.00	-	14.40	-

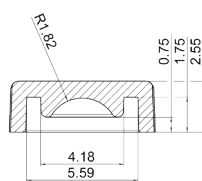
\*other options available

## The Luer Flat Cap Fluidic 1231

The Mini Luer cap seals the interface without touching the content of the interface.



Luer Flat Cap Fluidic 1231



Schematic drawing of the Luer Flat Cap Fluidic 1231

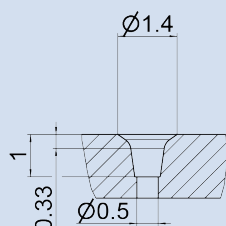
Product Code	Material	Color	Price [€/10 pieces]			
			1+	5+	10+	20+
10001767	TPE	Opaque	19.00	14.00	9.40	7.40

## Introducing the Through-Hole Interface

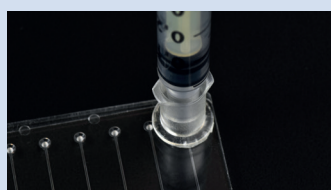
The through-hole is the interface found on all glass chips and some of our injection molded chips.

Key features are:

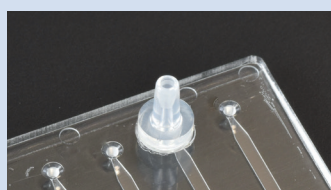
- Volume: 0.6  $\mu$ l
- Inner diameter: 1.4 mm
- Chips with through-holes can be mounted in a handling platform and attached to tubing
- Pipettes can be placed over the hole directly to fill a chip with liquids
- If other interfaces are needed, stand-alone olives, Luer and Mini Luer interfaces can be mounted on the through-hole



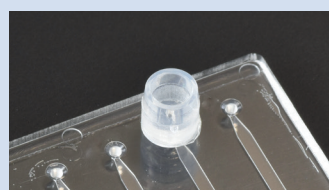
### The Through hole interface is compatible with...



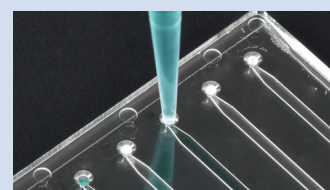
Female Luer Lock compatible connector with wide base (Fluidic 303)



Stand-alone olive (Fluidic 630)



Stand-alone Mini Luer (Fluidic 631)



Direct pipetting

### The LOC HP/CCI 1 handling platform



- Glass chips in microscopy slide format with through-hole or Mini Luer interfaces can be placed in the LOC HP/ CCI 1 handling platform
- For easier handling
- Available with and without heating elements
- It serves as a connector for the fluidic tubing which can be directly attached to the interfaces on the platform itself

### Applying stand-alone interfaces

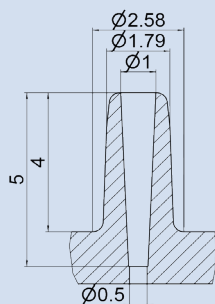


- Place the adhesive ring on the base of the stand-alone interface
- Mount the stand-alone interface on the through-hole
- Use two component epoxy resin glue to strengthen the bond by applying glue around the base of the stand-alone interface
- Assemble the tubing or other accessories depending on the kind of interface

Product Code	Description	Material	Color	Price [€/10 pieces]			
				1+	5+	10+	20+
10002029	Short female Luer compatible connector (Fluidic 1615)	PMMA*	Opaque	30.00	25.00	20.00	15.00
10000716	Adhesive ring (Fluidic 698) for short female Luer compatible connector			18.40		7.89	
10000700	Stand-alone olive fluidic interface (Fluidic 630)	PP	Opaque	19.00	14.00	9.40	7.40
10000701	Stand-alone female Mini Luer fluidic interface (Fluidic 631)			19.00		9.40	
10000717	Adhesive ring (Fluidic 699) for stand-alone interfaces olive and Mini Luer	PP	Opaque	18.40	14.00	7.89	7.40

\*other options available

## Introducing the Olive Interface

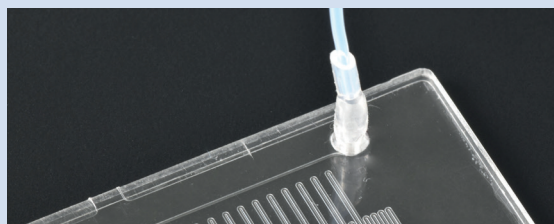


The olive interface is the most direct way to connect tubing.

Key features are:

- Volume: 2.5  $\mu$ l
- Inner diameter: 1 mm
- Height: 4 mm

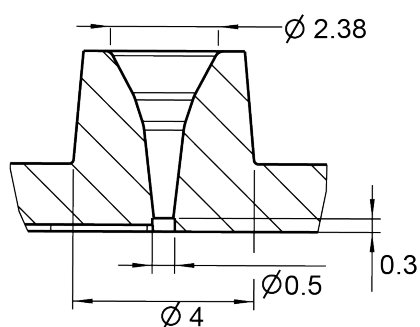
### Working with the Olive Interface



- Use a silicon sleeve to connect your tubing with the olive
- Slide the silicon sleeve over the olive and then over the tube
- The sleeve should not exceed 1 cm to avoid dead volume
- Cutting the PTFE tube and silicone sleeve at an angle helps with assembly

## Introducing the Pipetting Interface

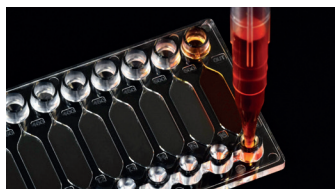
The pipetting interface enables you to easily pipette fluids directly on your chip.



Key features are:

- Height: 2.5 mm
- Compatible with most commercially available pipette tips
- Ideal for customized chips that require robotic filling
- Position the pipette directly on the pipetting interface
- Gently release the liquid into the channel

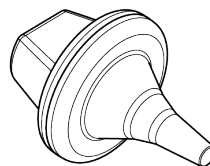
### The pipetting interface is compatible with



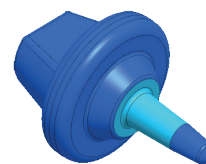
Filling of a chip with pipetting interface



Pipetting interface with plug (red: Fluidic 1236, opaque: Fluidic 1225)



Schematic drawing of Fluidic 1225



Schematic drawing of Fluidic 1236

Product Code	Connector Type	Material	Color	Price [€/10 pieces]			
				1+	5+	10+	20+
10001579	Pipette Adapter plug (Fluidic 1225)	PP*	Opaque	19.00	14.00	9.40	7.40
10001585	Pipette Adapter plug (Fluidic 1236)	PP*	Red*	19.00	14.00	9.40	7.40

\*other options available

